



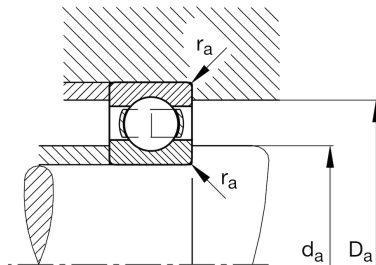
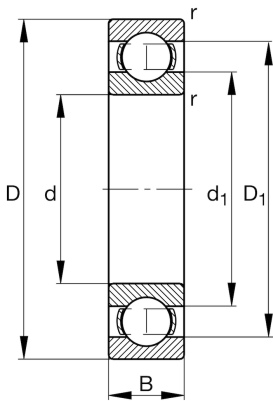
FAG

6008

Deep groove ball bearing

Schaeffler ID:
0167175110000Deep groove ball bearing 60, single row,
steel sheet metal cage

Technical information

**Main Dimensions & Performance Data**

d	40 mm	Bore diameter
D	68 mm	Outside diameter
B	15 mm	Width
C_r	17.800 N	Basic dynamic load rating, radial
C_{0r}	11.500 N	Basic static load rating, radial
C_{ur}	600 N	Fatigue load limit, radial
n_G	14.600 1/min	Limiting speed
n_{gr}	10.600 1/min	Reference speed
	0,181 kg	Weight

Dimensions

r_{min}	1 mm	Minimum chamfer dimension
D_1	59,1 mm	Shoulder diameter outer ring
d_1	49,3 mm	Shoulder diameter inner ring

Mounting dimensions

$d_{a min}$	44,6 mm	Minimum diameter shaft shoulder
$D_{a max}$	63,4 mm	Maximum diameter of housing shoulder
$r_{a max}$	1 mm	Maximum fillet radius

Calculation factors

f_0	15,2	Calculation factor
-------	------	--------------------

Temperature range

T_{min}	-30 °C	Operating temperature min.
T_{max}	120 °C	Operating temperature max.